



Comprehensive Business Information at your fingertips. Enhance decision making with credit checking and financial reports.

CRM Business Information from Data8



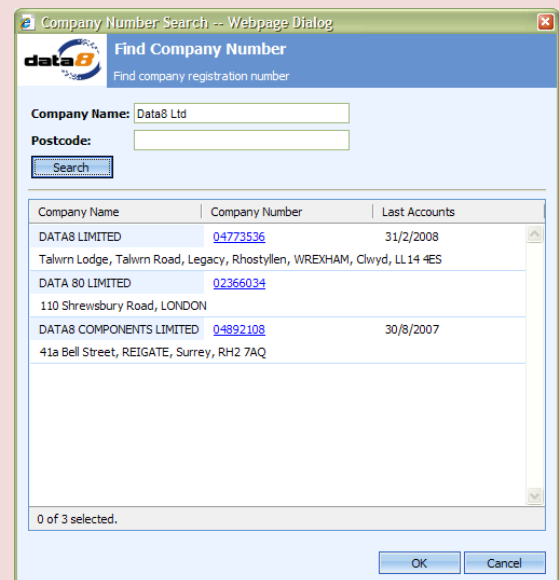
In hard economic times, the need for detailed information on your customer's finances has never been greater. Will extending a large credit line to a customer help you grow your business or only leave you exposed to large risks?

Qualify Leads

It's always important to know who you are about to do business with, and with the comprehensive CRM Business Information system you can see exactly that.

From just a company name or postcode you can quickly find the company details and drill down to find address, telephone, employees, directors, group structure, CCJ and financial information.

Armed with these details, you can now make a more informed decision on whether to pass the lead to your large or small accounts teams, or to disqualify the lead.



Quickly find the details of a new customer



Manage Risk

There is always some risk in doing business, but in these hard economic times you need to be surer than ever of a company's financial situation before giving them access to credit.

A simple traffic light system indicates to your sales force whether the customer should be offered credit and what the maximum limit is they should be given.

Our powerful credit scoring system uses information from sources such as Companies House, The London and Edinburgh Gazette and the Registries trust, and is updated daily to give you the up to date information you need.

Credit Rating **77** Refresh
 Recommended Limit £12,000.00
 Current Limit £0.00
 Use Recommended Limit

Get a simple to understand credit report

Constant Review

Company's circumstances change, and you don't want to be left out of pocket if a previously well-respected customer goes out of business.

With access to credit data that is updated daily, you don't need to be caught out. At the click of a button you can always get access to the latest credit details, or set up the system to check automatically and notify you of any changes you need to be aware of.

As well as reviewing credit information, you can also see detailed financial reports including Profit & Loss and Balance Sheet, and exact scanned copies of signed documents submitted to Companies House.

Document Name	Date
Last Filed Accounts	31/03/2008

0 of 1 selected.

View PDFs of scanned Companies House documents

Financial Information	01/10/2006 - 30/09/2007	01/01/2006 - 31/12/2006	01/01/2005 - 31/12/2005
Accounts	12	12	12
Months:	12	12	12
Currency:	GBP	GBP	GBP
Profit and Loss			
Consolidated Accounts:			
Turnover:	3,276,000.00	286,095,000.00	381,974,000.00
Export:			

Up to 5 years of detailed P&L and Balance Sheet reports

For further information and any technical or licensing enquiries, or if you would like to see CRM Business Information available for a non-Microsoft CRM system, please contact us at info@data8.co.uk or by phone on 0151 355 4555.

Data8 Ltd, Unit 1, Portside Business Park, Portside North, Ellesmere Port, CH65 2HQ

